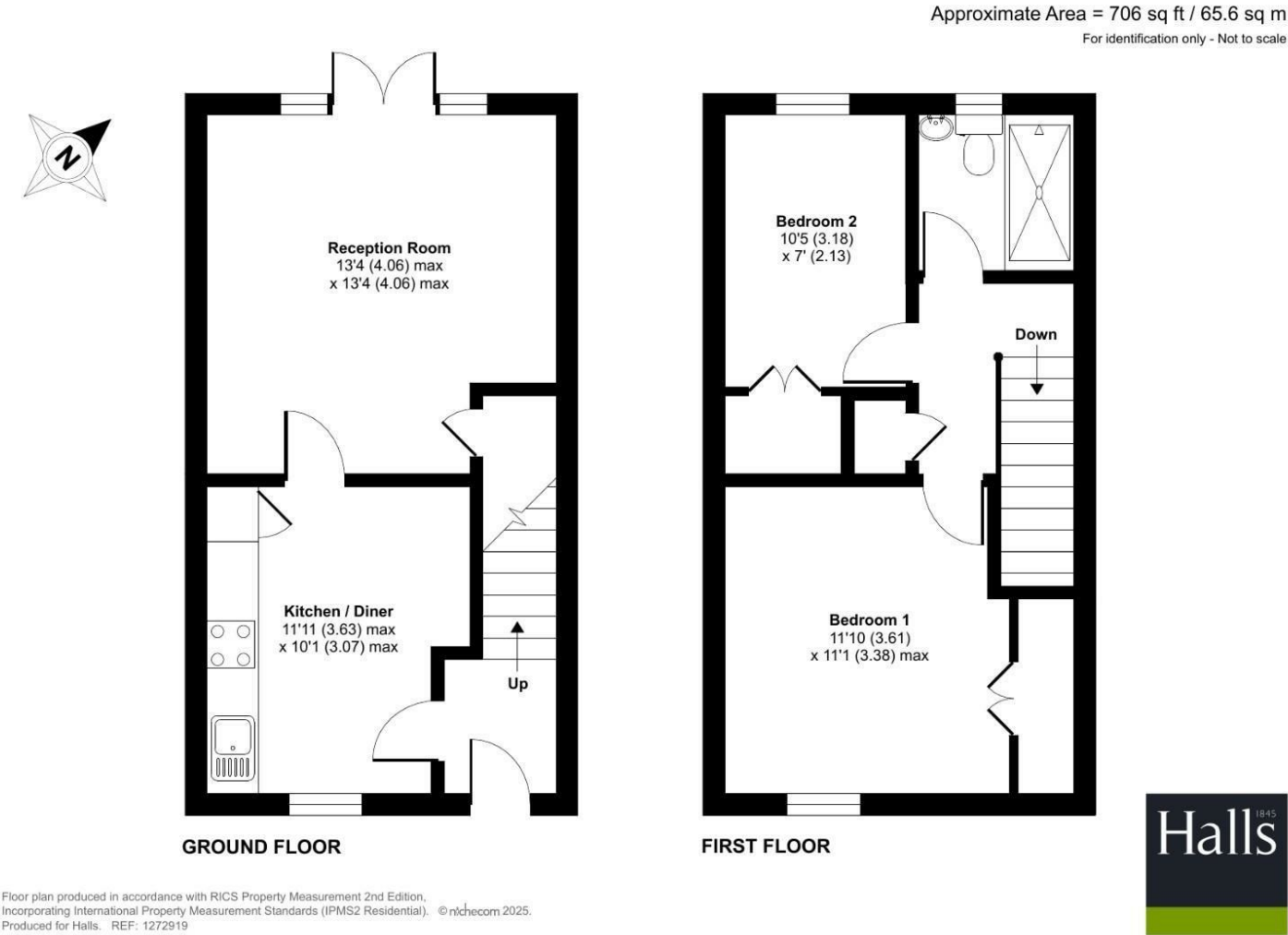


FOR SALE

1 Manor House Close, Montgomery, SY15 6UN



FOR SALE

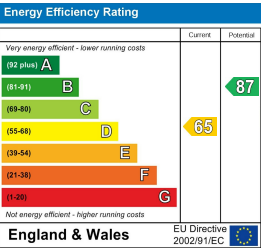
Offers in the region of £175,000

1 Manor House Close, Montgomery, SY15 6UN

Property to sell? We would be delighted to provide you with a free no obligation market assessment of your existing property. Please contact your local Halls office to make an appointment. **Mortgage/financial advice.** We are able to recommend a completely independent financial advisor,

who is authorised and regulated by the FCA. Details can be provided upon request. **Do you require a surveyor?** We are able to recommend a completely independent chartered surveyor. Details can be provided upon request.

Energy Performance Rating



No Onward Chain- Two bedroom end of terrace property situated in the popular town of Montgomery. The accommodation comprises entrance hall, kitchen/diner, lounge with French doors to the rear, landing, two bedrooms and shower room. The property has off-road parking to the rear, double glazing and electric heating. The property does require general modernisation.



01938 555552

Welshpool Sales
14 Broad Street, Welshpool, Powys, SY21 7SD
E: welshpool@hallsgb.com



IMPORTANT NOTICE. Halls Holdings Ltd and any joint agents for themselves, and for the Vendor of the property whose Agents they are, give notice that: (i) These particulars are produced in good faith, are set out as a general guide only and do not constitute any part of a contract (ii) No person in the employment of or any agent of or consultant to Halls Holdings has any authority to make or give any representation or warranty whatsoever in relation to this property (iii) Measurements, areas and distances are approximate. Floor plans and photographs are for guidance purposes only (photographs are taken with a wide angled / zoom lenses) and dimensions shapes and precise locations may differ (iv) It must not be assumed that the property has all the required planning or building regulation consents. Halls Holdings, Bowmen Way, Shrewsbury, Shropshire SY4 3DR. Registered in England 06597073.



hallsgb.com

01938 555552

Residential / Fine Art / Rural Professional / Auctions / Commercial



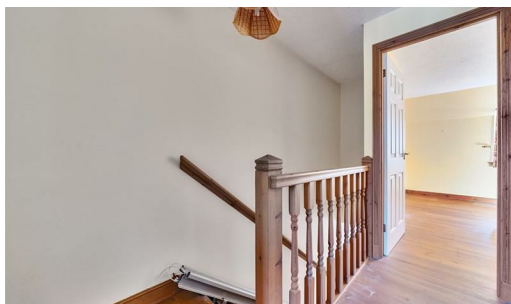
1 Reception Room/s



2 Bedroom/s



1 Bath/Shower Room/s



- Two bedroom end of terrace property
- Situated in the popular town of Montgomery
- Accommodation includes kitchen/diner, lounge with French doors and shower room
- Off-road parking to the rear
- The property does require general modernisation
- No onward chain

Frosted double glazed entrance door to

Entrance Hall

Wall mounted storage heater, stairs off, exposed timber floor, fuse board.

Kitchen

Fitted with a range of wall and base units, laminate work surfaces, stainless steel sink drainer unit, mixer tap, plumbing and space for washing machine, double glazed window to the front elevation, space for electric cooker, space for fridge freezer, wall mounted storage heater, exposed timber floor, extractor canopy, tiled splashback, door to

Lounge/ Dining Room

Double glazed French doors with side windows leading to rear elevation, wall mounted storage heater, exposed timber floor, under stair storage cupboard.

Landing

Loft access, airing cupboard, exposed timber flooring.

Bedroom One

Double glazed window to front elevation, exposed timber flooring, wall mounted storage heater, built-in double wardrobe with hanging rail.

Bedroom Two

Double glazed window to rear elevation, exposed timber floor, wall mounted storage heater, built-in double wardrobe with hanging rail.

Shower Room

Walk-in electric shower, pedestal wash hand basin, low level W.C., frosted double glazed window to rear elevation, extractor fan, wall mounted electric heater.

Externally

To the front, the property has gated pedestrian access from the road and pathway to front door, garden area, courtesy light. To the rear of the property there is a paved seating area with steps down to allocated parking area, courtesy light.

Agents Notes

This property is for sale with no onward chain.

Services

Mains electricity, water and drainage are connected at the property. None of these services have been tested by Halls.

Local Authority/Tax Band

Powys County Council, Ty Maldwyn, Brook Street, Welshpool, SY21 7PH. Telephone: 01938 553001
The property is in band 'C'

Viewings

Strictly by appointment only with the selling agents: Halls, 14 Broad Street, Welshpool, Powys, SY21 7SD. Tel No: 01938 555552. Email: welshpool@halls.gb.com

Directions

Postcode for the property is SY15 6UN

What3Words Reference is working.prepped.shrub

Anti Money Laundering Checks

We are legally obligated to undertake anti-money laundering checks on all property purchasers. Whilst we are responsible for ensuring that these checks, and any ongoing monitoring, are conducted properly; the initial checks will be handled on our behalf by a specialist company, Movebutler, who will reach out to you once your offer has been accepted.

The charge for these checks is £30 (including VAT) per purchaser, which covers the necessary data collection and any manual checks or monitoring that may be required. This cost must be paid in advance, directly to Movebutler, before a memorandum of sale can be issued, and is non-refundable. We thank you for your cooperation.

Websites

Please note all of our properties can be viewed on the following websites:
www.halls.gb.com
www.rightmove.co.uk
www.onthemarket.com